

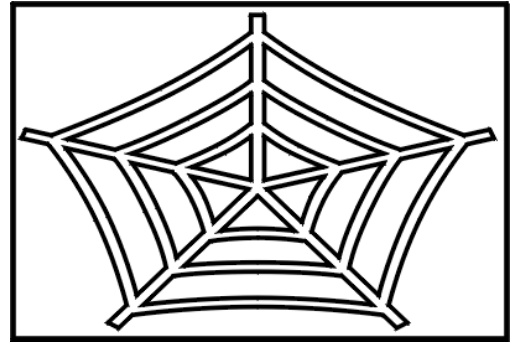
Name: \_\_\_\_\_ Date: \_\_\_\_\_

Class: \_\_\_\_\_ Teacher: \_\_\_\_\_

# Spelling Challenge

What do you call a boomerang that doesn't work? A stick.

For each question below choose the word that is spelled correctly and matches the clue provided. Write the letter of the correctly spelled word in the space by the question number.



B 1. A. refrigeratore B. refrigerator C. rafrigerator D. refrigerater  
This keeps food cold.

A 2. A. bathroom B. bathrowm C. bathroam D. bathrom  
The room with the toilet and shower.

B 3. A. toels B. towels C. touels D. towelse  
Dry off with one of these.

D 4. A. curtainc B. curtans C. kurtains D. curtains  
These keep the sun out.

D 5. A. televission B. terevision C. televition D. television  
Watch this for entertainment.

A 6. A. chair B. chaire C. char D. chaer  
You sit on one of these at the table.

B 7. A. tasle B. table C. tabl D. tabel  
You put your plates and cups on this.

D 8. A. wardrobee B. whardrobe C. wardrob D. wardrobe  
Keep your clothes here.

B 9. A. telephonu B. telephone C. telepphone D. telefone  
Call your friends using this.

D 10. A. garege B. garag C. garidge D. garage  
Cars are safe in here.